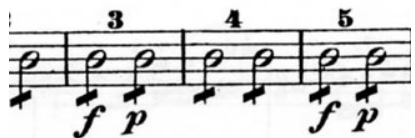


PHL 317K (42380)

Philosophy of the Arts



MWF 10:00-11:00am

WAG 302

Bryce Dalbey (instructor)

[bdalbey@utexas.edu](mailto:bdalbey@utexas.edu)

WAG 411

Office Hours: M 11:00-12:00, Th 4:00-5:00 (email to set up another time)

Alicia Armijo (reader)

[aliciaarmijo@utexas.edu](mailto:aliciaarmijo@utexas.edu)

WAG 405

Office Hours: MW 9:00-10:00 (email to set up another time)

## Course Description

This course is an introduction to some of the philosophical questions about art, including: What makes something an artwork? What is valuable about art? What makes an artwork beautiful? Do pieces of art have ‘meanings’ and if so what are they? We will focus on a few sorts of art (e.g. music, visual art, the performing arts) and see whether these questions can be answered generally, or rather only relative to particular kinds of art. We will also look at less traditional forms of art and see whether they reveal anything novel about the nature of art and the practice of creating and appreciating art.

## Syllabus Disclaimer

This syllabus, especially the topics and readings for each day, will almost certainly change as the semester progresses. If it changes I will upload a new version to Canvas at least a week before the dates for which the changes were made. A change in the syllabus is no excuse to have not done the readings or be prepared for a test on a given day.

## Texts

There is one required text for this course.

**Title:** *Philosophy of the Arts: An Introduction to Aesthetics*, 3<sup>rd</sup> Edition

**Author:** Gordon Graham

## Attendance

Attendance is mandatory and will be taken. For every unexcused absence your participation grade drops by 25% (e.g. after four unexcused absences your participation grade drops to 0. However, you can be excused from class for a documented illness, family emergency, religious holiday, or any other condition specified by the university OR if you email either of us before class begins on the day you will miss to tell us (truthfully) why you cannot attend. If you miss class on the day of an exam you must make it up before the subsequent exam.

Attendance not guarantee a full participation grade. You must also engage with the class on an at least semi-regular basis.

## **Assignments**

There is good evidence that frequency in testing correlates well with high retention of course material. To that end, instead of a single final exam and one or two large exams throughout the term there will be a 30 minute single prompt essay exam every two weeks (for a total of eight). Two days before each exam you will receive via Canvas a set of three essay prompts. At the exam you will be given two of those three from which you will choose one to answer. You are encouraged to work with other students in the class to construct and practice writing essays for these exams.

There is one other assignment in this course: visit either of us during office hours before 9/12 (i.e. within the first three weeks of the term) to introduce yourself.

## **Grade Distribution**

Attendance	15%
Office Visit	5%
Essay Exams (total of eight)	80%

## **Accessibility**

I try hard to make all aspects of my course accessible to all students. If you have an academic accommodation through Services for Students with Disabilities, please ask them to set up the relevant accommodation with me (See <http://ddce.utexas.edu/disability/>)

If you have some concern regarding course accessibility that falls outside the purview of SSD, please come speak to me about it. I would like to help you get as much out of this course as possible.

## **Academic Dishonesty**

If you are found engaging in any form of academic misconduct on an exam or other course-related task you will, at a minimum, receive a zero on that assignment. You may also fail the course and face official disciplinary hearings. Please ask me if you are unsure whether something counts as academic misconduct.

## Tentative Partial Course Outline

The topics and readings for each day will almost certainly change as the semester progresses. If the syllabus changes I will upload a new version to Canvas and email the class.

Week	Date	Material	Readings
Week 1	8/24	Introduction and syllabus	—
	8/26	Taste	<i>Graham</i> pp 3-8
Week 2	8/29	Taste	<i>Graham</i> pp 3-8 (again)
	8/31	Taste	<i>Graham</i> pp 8-13
	9/02	Beauty, <b>Exam 1</b>	—
Week 3	9/05	Labor Day	—
	9/07	Beauty	<i>Graham</i> pp 14-21
	9/09	Beauty	<i>Graham</i> pp 14-21 (again)
Week 4	9/12	Beauty	<i>Graham</i> pp 21-30
	9/14	Emotion	<i>Graham</i> pp 31-40
	9/16	Emotion, <b>Exam 2</b>	—
Week 5	9/19	Emotion	<i>Graham</i> pp 40-51
	9/21	Understanding	<i>Graham</i> pp 52-62
	9/23	Understanding	<i>Graham</i> pp 62-75
Week 6	9/26	Understanding	—
	9/28	Music	<i>Graham</i> pp 76-88
	9/30	Music, <b>Exam 3</b>	—
Week 7	10/03	Music	<i>Graham</i> pp 88-102
	10/05	Visual Arts	<i>Graham</i> pp 103-116
	10/07	Visual Arts	<i>Graham</i> pp 116-126
Week 8	10/10	Visual Arts	—
	10/12	Literature	<i>Graham</i> pp 127-140
	10/14	Literature, <b>Exam 4</b>	—
Week 9	10/17	Literature	<i>Graham</i> pp 140-148
	10/19	Performing Arts	<i>Graham</i> pp 149-163
	10/21	Performing Arts	—
Week 10	10/24	Performing Arts	—
	10/26	Architecture	<i>Graham</i> pp 164-174
	10/28	Architecture, <b>Exam 5</b>	—
Week 11	10/31	Architecture	<i>Graham</i> pp 174-182
	11/02	Architecture	—
	11/04	Architecture	—
Week 12	11/07	Modern Art	<i>Graham</i> pp 183-191
	11/09	Modern Art, <b>Exam 6</b>	—
	11/11	Modern Art	<i>Graham</i> pp 191-199
Week 13	11/14	Feminist Aesthetics	—
	11/16	Feminist Aesthetics	—
	11/18	Feminist Aesthetics	—
Week 14	11/21	<b>Exam 7</b>	—
	11/23	Thanksgiving	—
	11/25	Thanksgiving	—

Week 15	11/28	Nature	<i>Graham</i> pp 200-213
	11/30	Nature	<i>Graham</i> pp 213-218
	12/02	Nature	—
Week 16	12/05	<b>Exam 8</b>	—